

Les services hydrométéos pour la protection de la biodiversité

Emmanuel Mambela
Spatial Info Analyst
Gabon Program

The Nature
Conservancy 
Africa



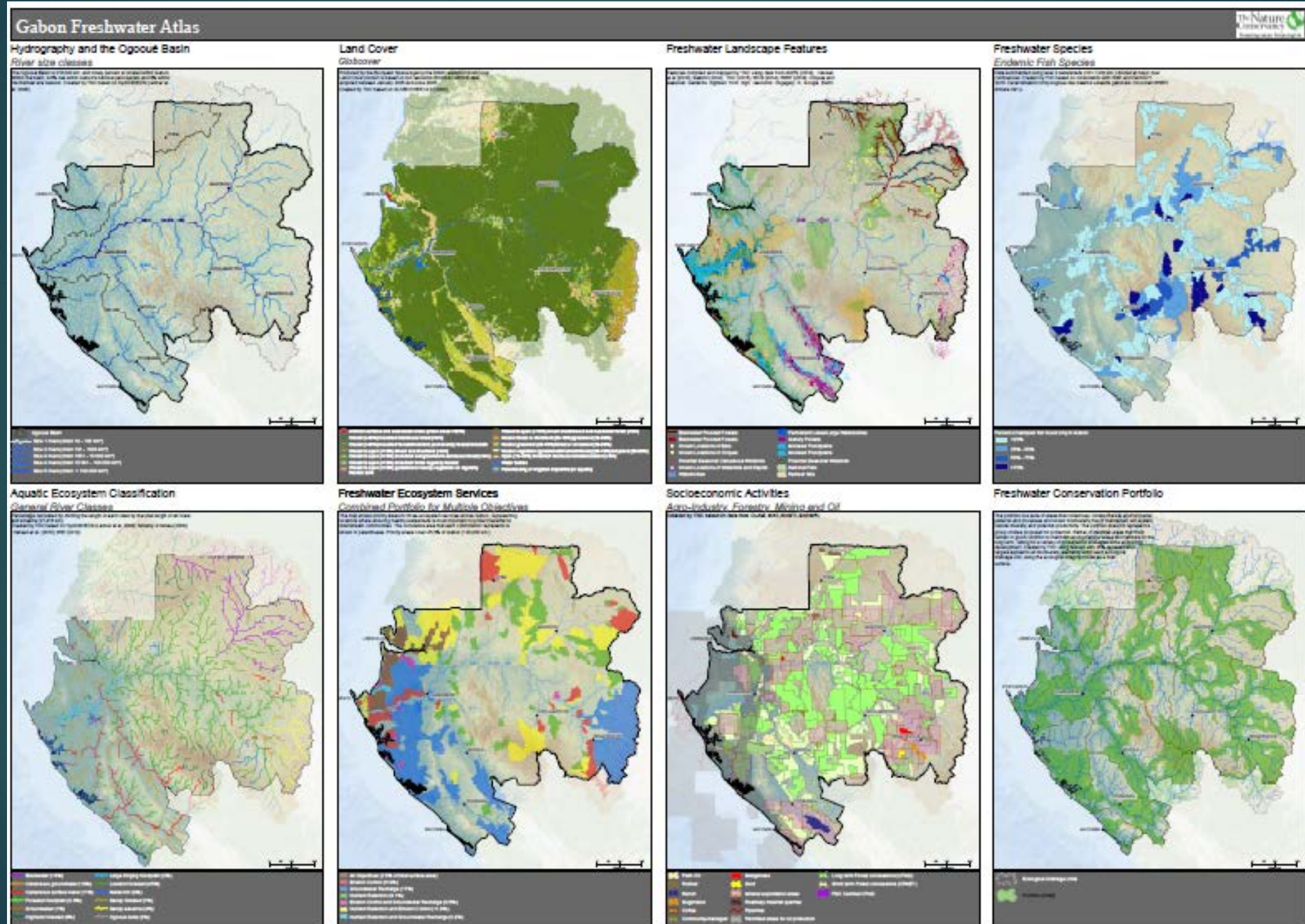
Au Gabon, notre stratégie consiste à:



- Utiliser la science comme base de la planification de l'utilisation des terres
- Aider à la gestion durable de la pêche en eau douce
- Aider à pratiquer l'Hydroélectricité durable











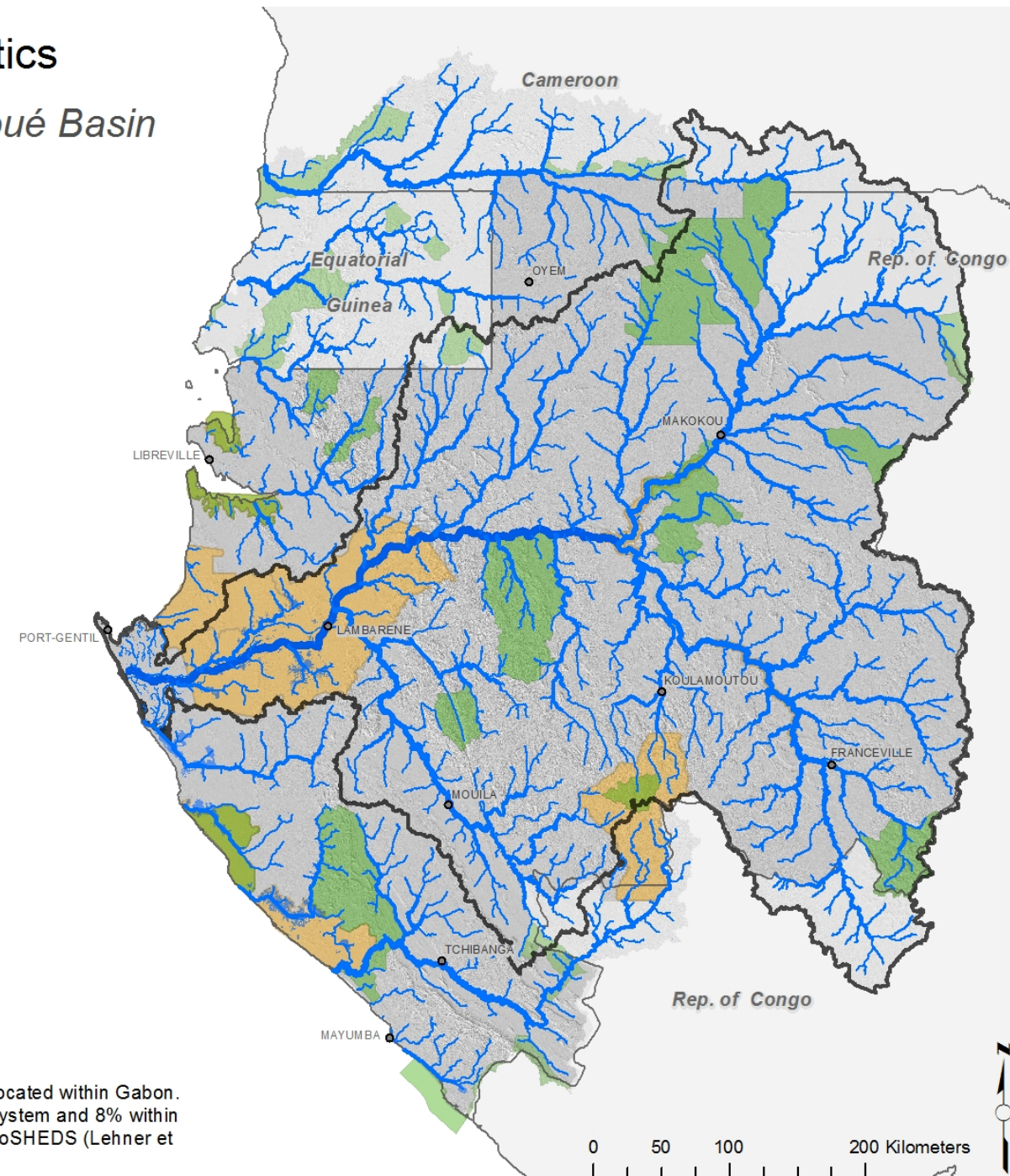
Contexte



Geophysical Characteristics

Hydrography and the Ogooué Basin

-  Ogooué Basin
-  National Park
-  Ramsar sites
-  1 River size class
-  2
-  3
-  4
-  5



The Ogooué Basin is 218,000 km² and ninety percent is located within Gabon. Within the basin, 9.6% lies within Gabon's national park system and 8% within the Ramsar site network. Created by TNC based on HydroSHEDS (Lehner et al. 2008).

Contexte

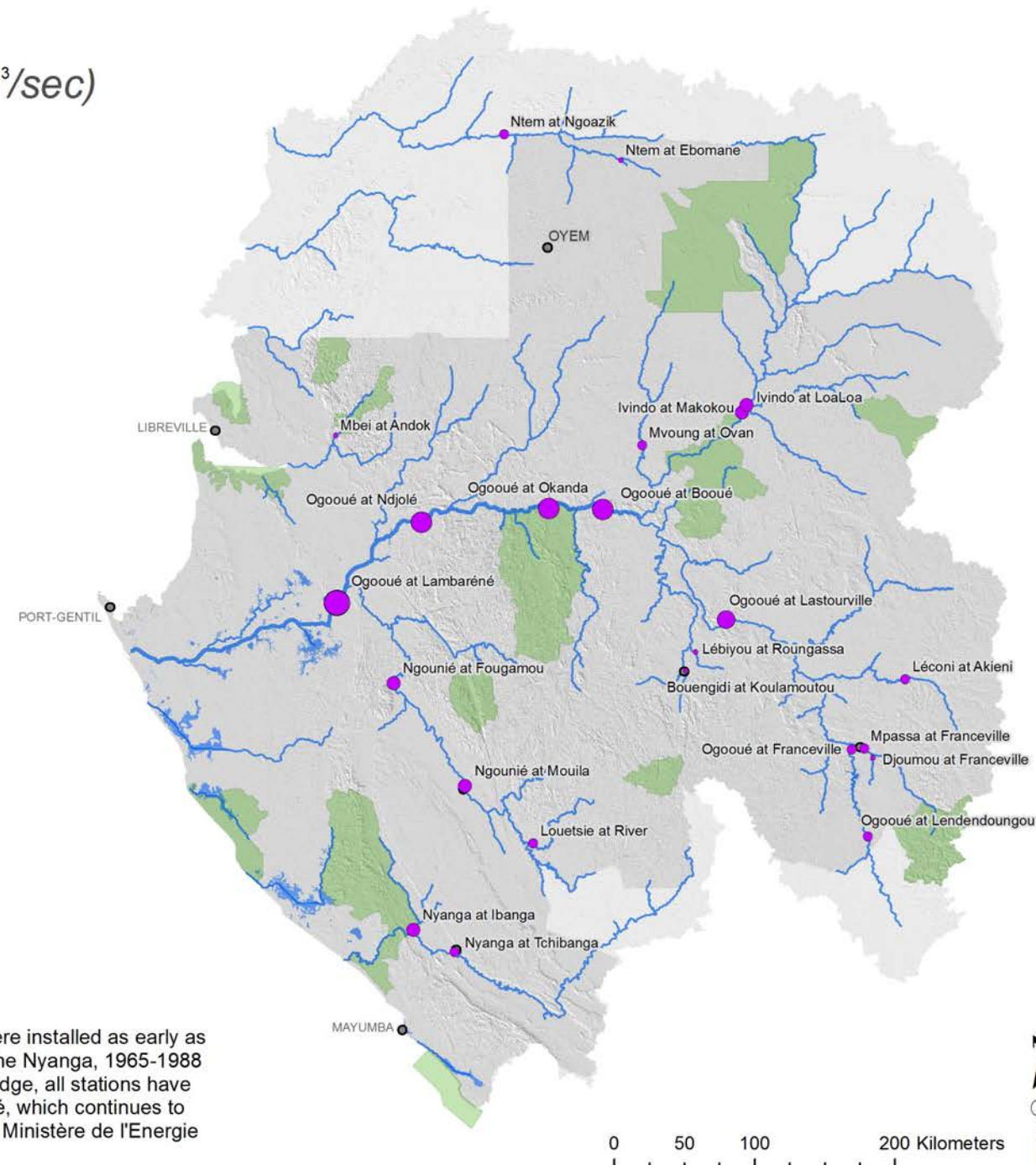
23 stations de mesure réparties dans tout le Gabon dès 1965.

À notre connaissance, toutes les stations sont inactives depuis 1989, à l'exception de celle de Lambaréné, qui continue de collecter des données quotidiennes.

Gauge Stations

Mean Annual Discharge (m^3/sec)

- < 100
- 100 - 350
- 350 - 1,000
- 1,000 - 2,000
- 2,000 - 3,500
- 3,500 - 5,000
- National Park



Locations for 23 gauge stations throughout Gabon that were installed as early as 1965. Data were recorded for the periods 1965-1973 for the Nyanga, 1965-1988 for the Ivindo, and 1980-1986 for the Ntem. To our knowledge, all stations have been inactive since 1989, except the station at Lambaréné, which continues to collect daily data. Created by TNC based on data from Le Ministère de l'Energie et des Ressources Hydrauliques.

Stations Pilotes

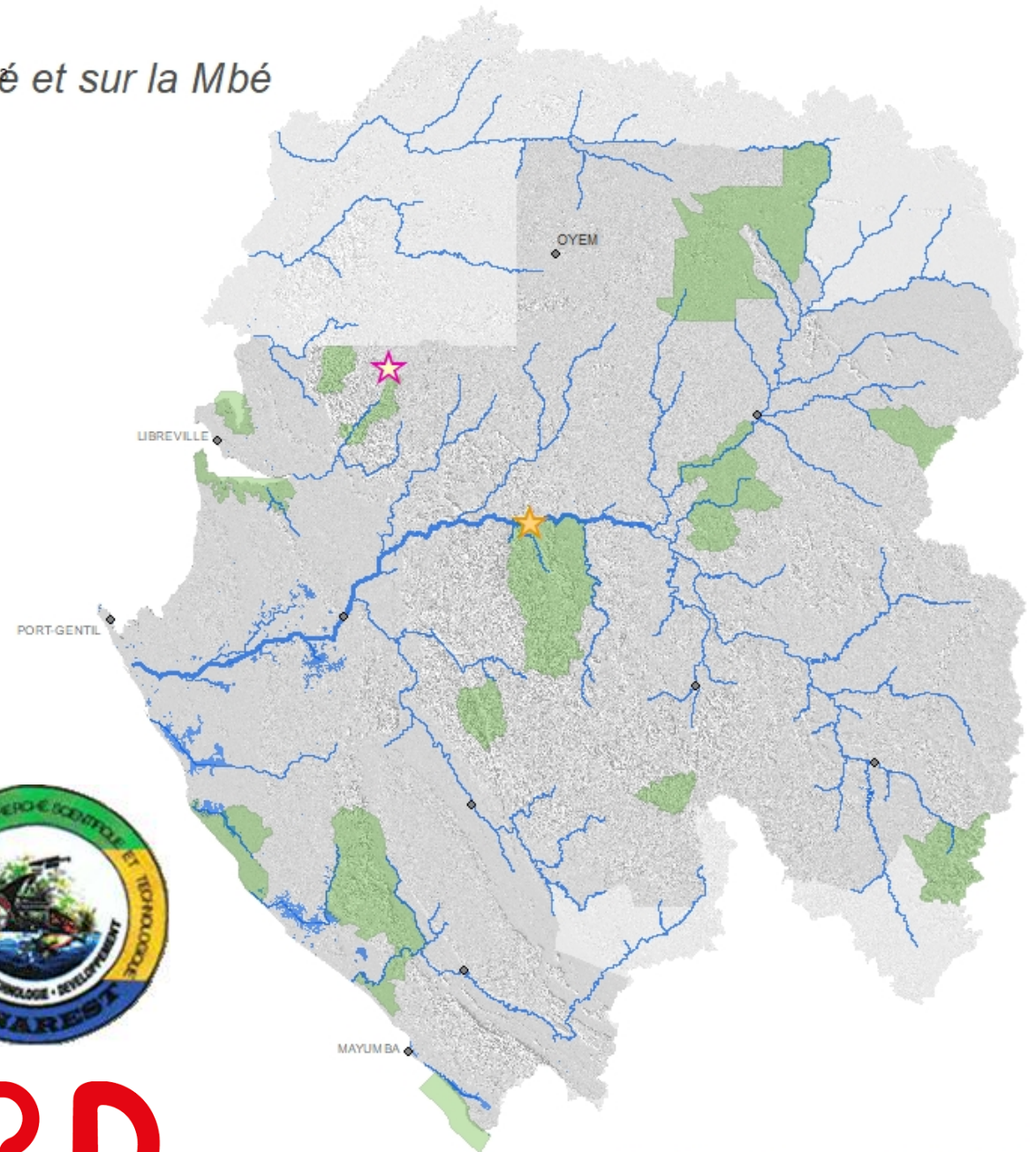
But

Servir de base pour le rétablissement d'un système de mesures hydrométriques.

Stations hydrométriques

Stations pilotes sur l'Ogooué et sur la Mbé

- ★ Stations hydrométéo
- ★ Station hydrométrique
- National Park



MINISTÈRE DE L'ÉNERGIE ET DES RESSOURCES
HYDRAULIQUES



Les Stations pilotes

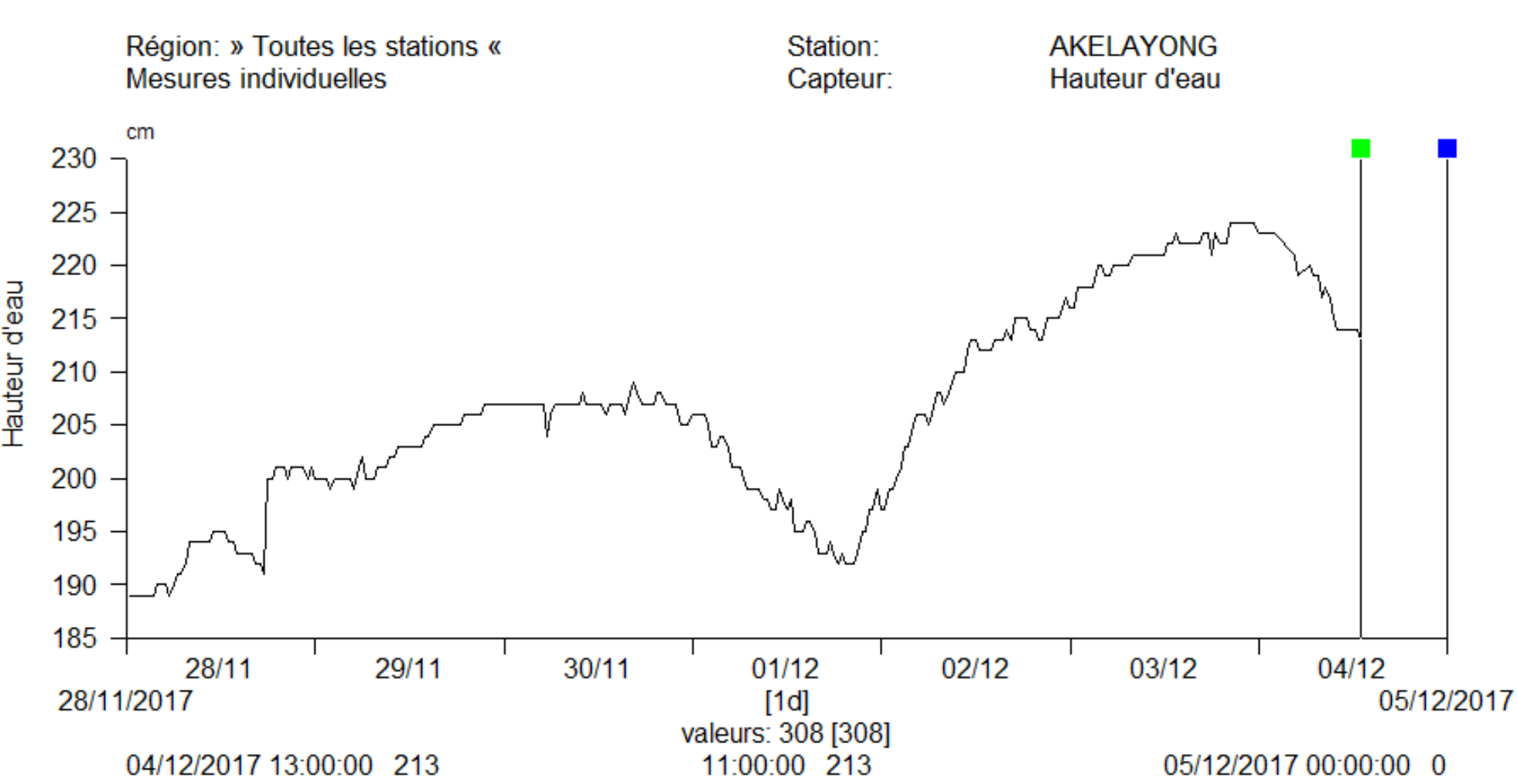
Mesure	Fréquence
Hauteur d'eau	60
Pluie	6
Turbidité	60
MeS	60
Tension de Batterie	720

Température de l'air	60
Humidité de l'air	60
Pression Atm	60
Vitesse du Vent	60
Direction du Vent	60
Radiation Solaire	60



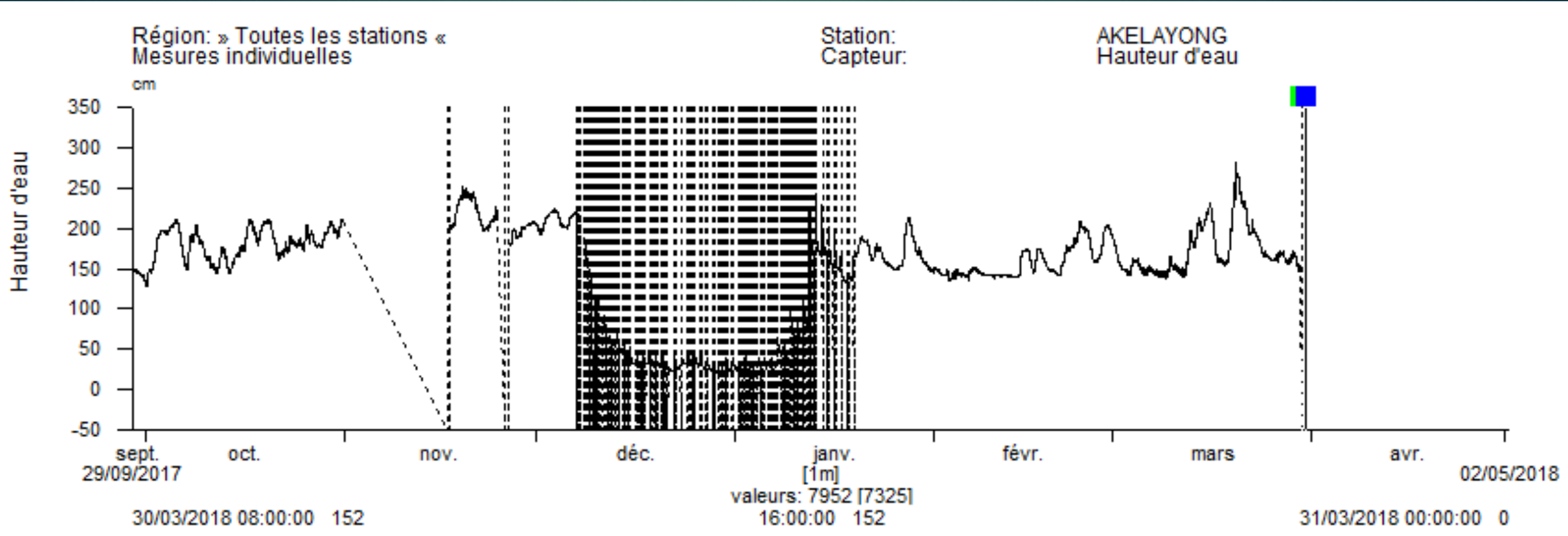
Les stations pilotes

Akelayong



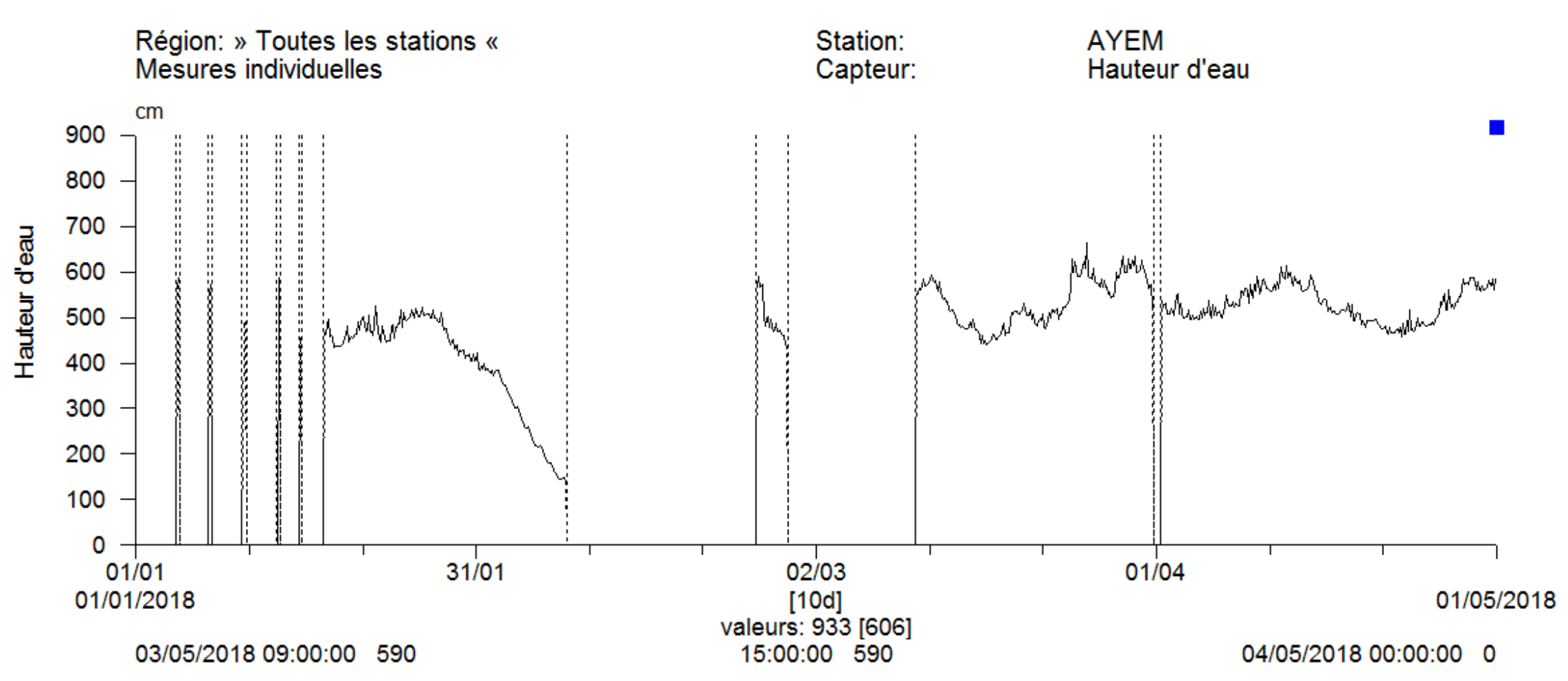
Les stations pilotes

Akelayong



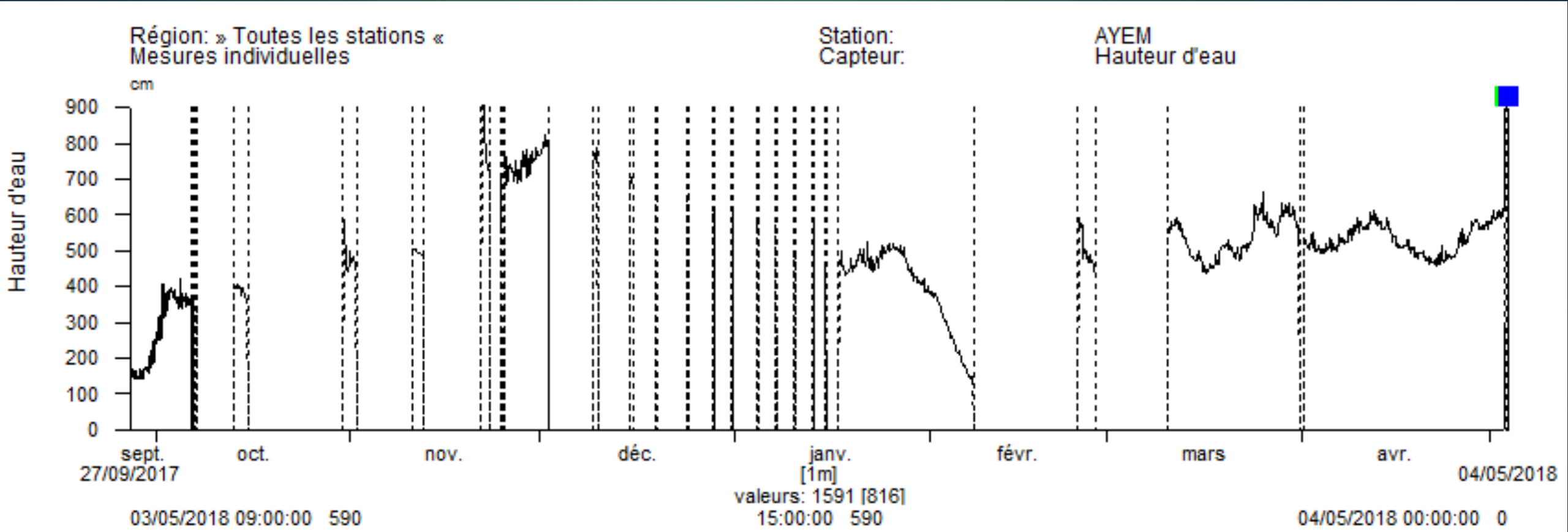
Les stations pilotes

Ayem



Les stations pilotes

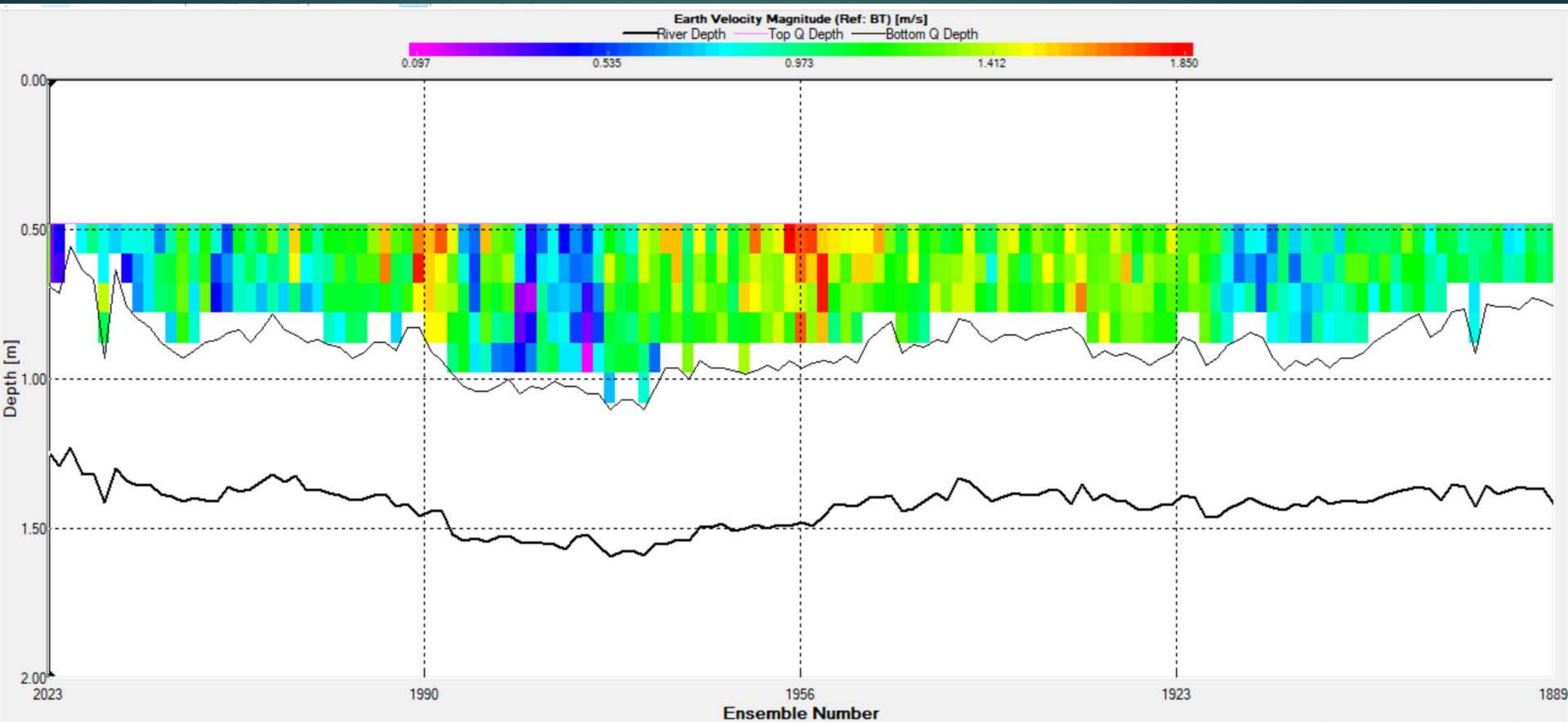
Ayem



Les station

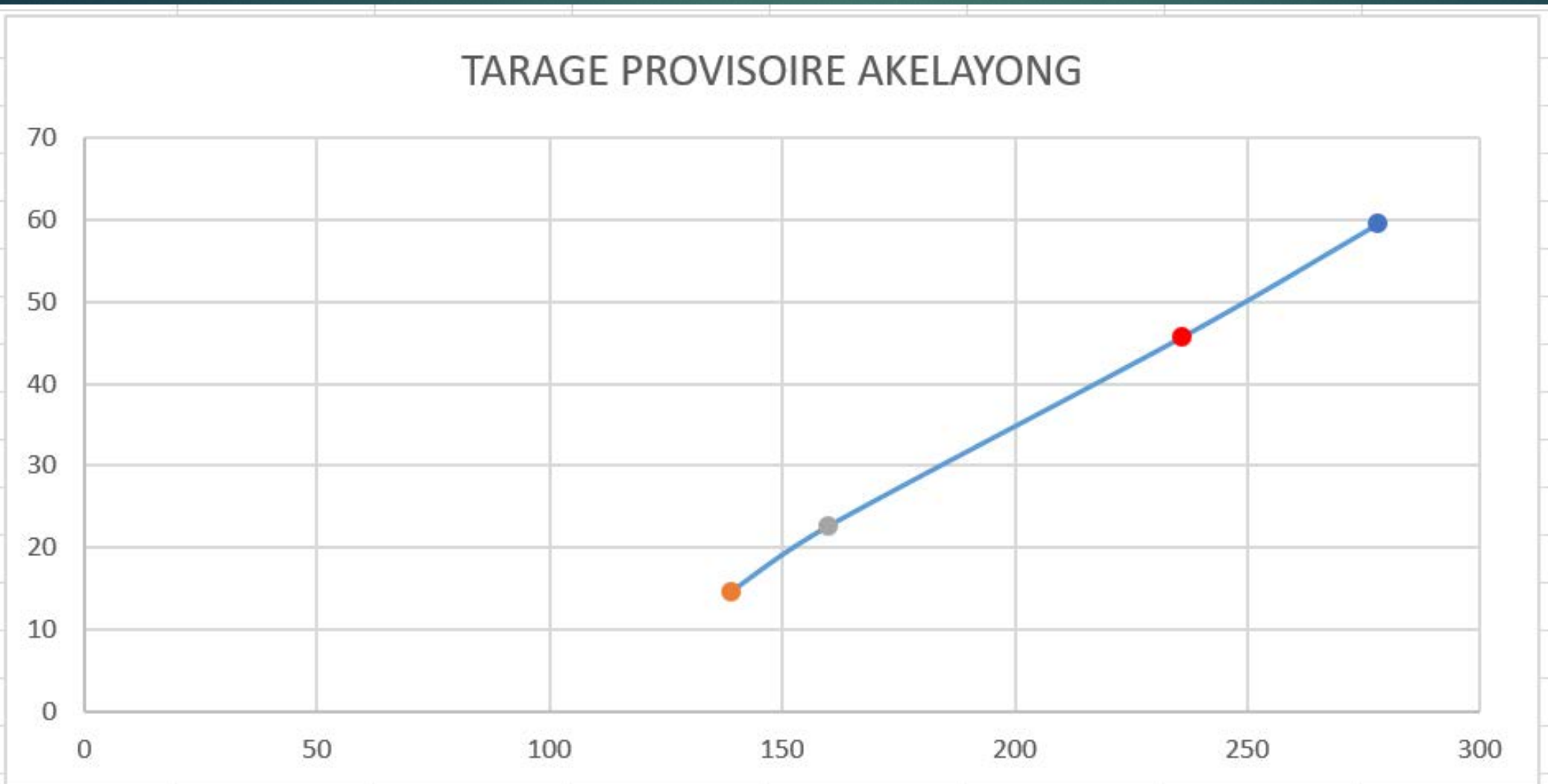


Les stations pilotes



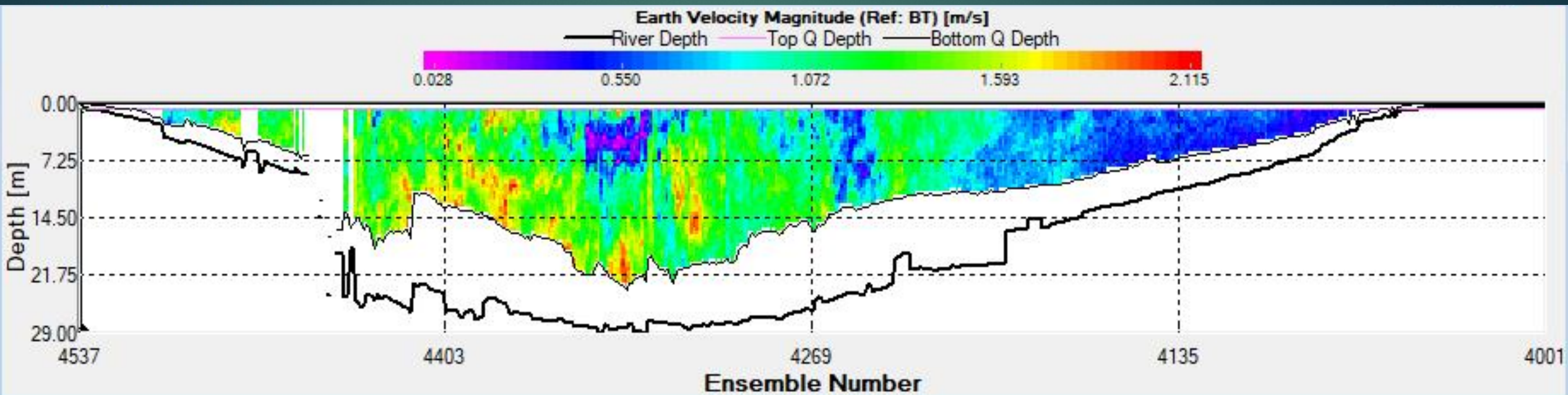
Les stations pilotes

Akelayong



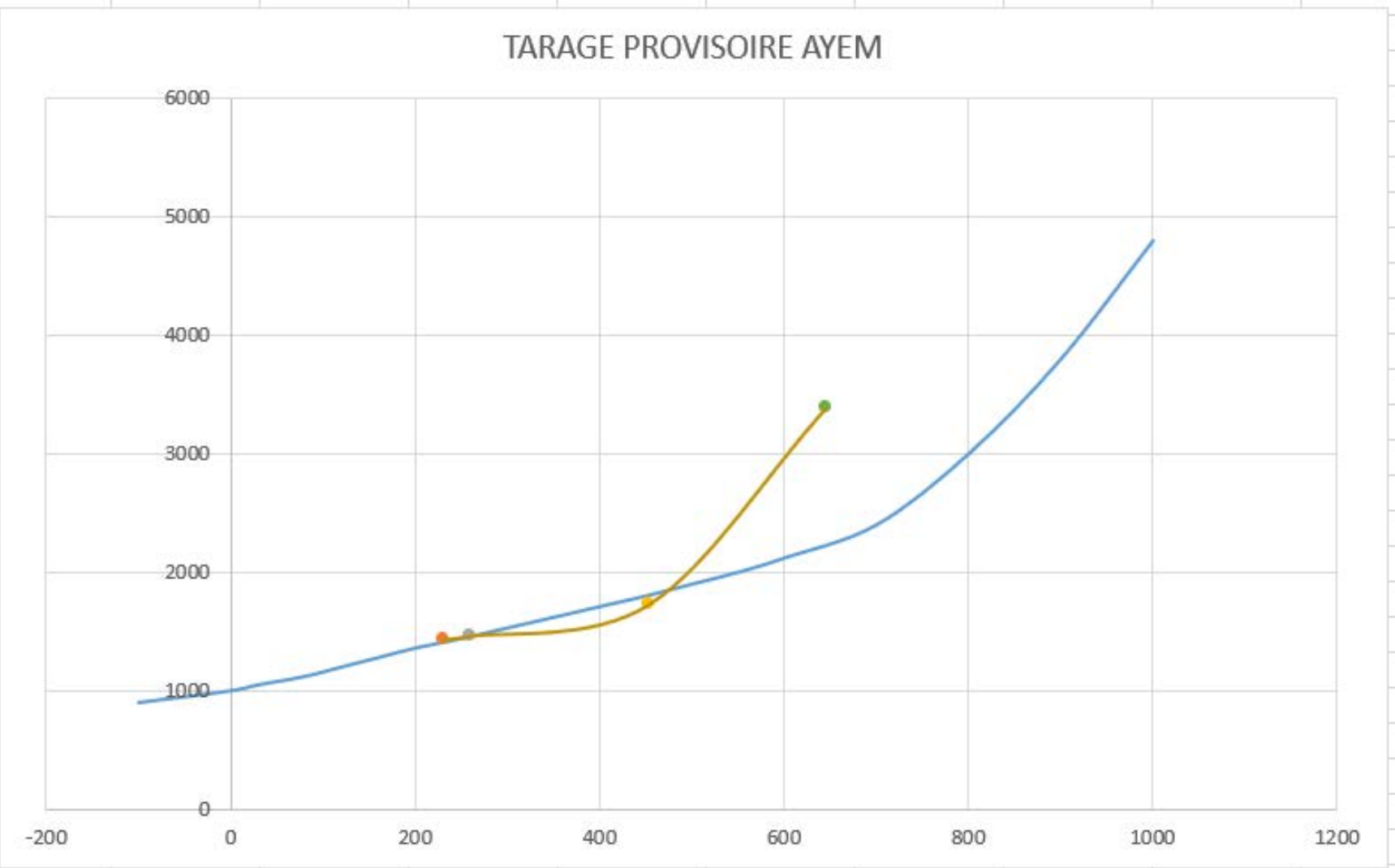
Les stations pilotes

Ayem



Les stations pilotes

Ayem



Thank you
Merci



QUESTIONS

Photo: Timothy Boucher